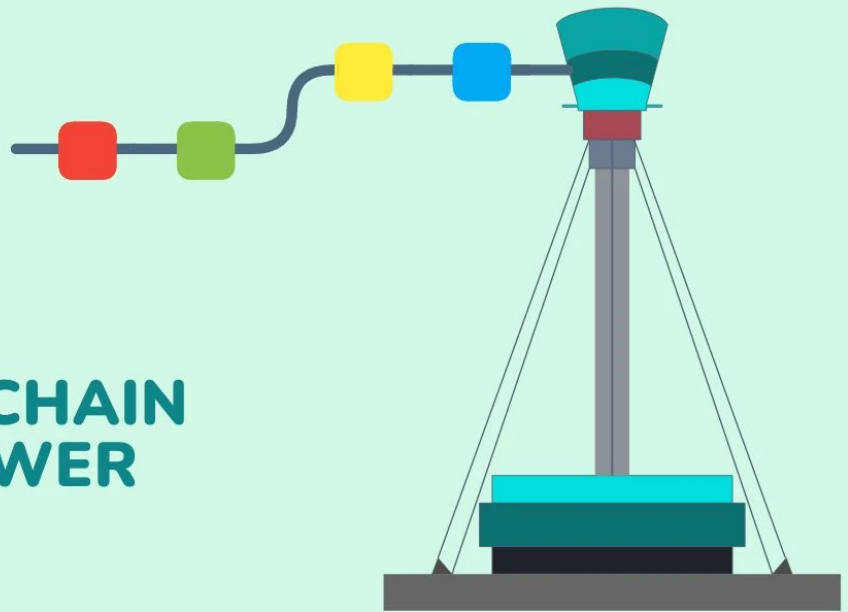




**HOLISTIQUE
TRAINING**



SAP SUPPLY CHAIN CONTROL TOWER

SAP Supply Chain Control Tower Course Overview

Duration: 5 Days

Language: en

Course Code: PO1-141

Objective

Upon completion of this course, participants will be able to:

- Understand the core functions and benefits of the SAP Supply Chain Control Tower.
- Learn how to set up and configure real-time supply chain visibility dashboards.
- Gain knowledge of data integration and predictive analytics in supply chain management.
- Develop skills to manage supply chain exceptions and automate responses.
- Learn how to optimise supply chain performance and reduce operational risks using SAP tools.
- Be able to apply data-driven insights to make informed supply chain decisions.

Audience

This course is intended for

- **Supply Chain Managers and Professionals:** Individuals responsible for overseeing and optimising supply chain operations within their organisation.
- **IT and Data Analysts:** Professionals involved in managing and analysing supply chain data who want to improve their use of SAP tools.
- **Operations Managers:** Managers responsible for ensuring the efficiency of supply chain processes who need real-time visibility and control.
- **Procurement and Inventory Specialists:** Professionals managing procurement, inventory, and supplier relationships who need data-driven insights for decision-making.
- **SAP Consultants:** Individuals working with SAP supply chain solutions who want to deepen their knowledge of the Control Tower functionality.
- **Executives and Decision-Makers:** Senior leaders involved in strategic decision-making who require high-level visibility into supply chain performance and risks.

Training Methodology

This course will utilise a combination of theoretical instruction and hands-on practical exercises to ensure participants gain a deep understanding of SAP Supply Chain Control Tower. The methodologies include:

- **Instructor-led lectures:** SAP supply chain management experts will explain the software's functionalities and benefits.
- **Hands-On Training:** Participants will work within the SAP environment to configure dashboards, integrate data, and analyse real-time supply chain scenarios.
- **Case Studies:** Real-world case studies will be analysed, allowing participants to apply their knowledge to practical supply chain challenges.
- **Interactive Discussions:** Facilitated discussions will allow participants to share experiences and insights into supply chain management using SAP tools.
- **Assessments and Quizzes:** Throughout the course, participants will be tested on their understanding of the material, ensuring knowledge retention and practical application.

Summary

The SAP Supply Chain Control Tower is a powerful solution that offers real-time visibility, analytics, and decision-making capabilities to manage complex supply chains efficiently. This course provides participants with a comprehensive understanding of using SAP's Control Tower to improve supply chain operations, enhance decision-making, reduce risks, and optimise performance. The need for agile, data-driven management tools has grown as supply chains become increasingly global and interconnected. The SAP Control Tower enables organisations to respond quickly to disruptions, monitor real-time performance, and ensure supply chain compliance.

Participants will gain hands-on experience with the core functionalities of the SAP Supply Chain Control Tower, learning how to configure dashboards, analyse data, and implement actionable insights. The course will cover essential topics such as integrating supply chain data, utilising predictive analytics, managing exceptions, and automating responses to supply chain events. Additionally, the course will highlight the key benefits of using SAP to streamline supply chain processes, such as reducing lead times, improving

inventory management, and enhancing supplier collaboration.

By the end of the course, participants will be equipped with the skills to navigate modern supply chain complexities using the SAP Control Tower, allowing them to make data-driven decisions that improve supply chain resilience and efficiency.

Course Content & Outline

Section 1: Introduction to SAP Supply Chain Control Tower

- Overview of SAP Supply Chain Solutions
- Key Features of the Control Tower
- Importance of Real-Time Visibility and Analytics

Section 2: Setting Up the Supply Chain Control Tower

- Configuring Dashboards for Real-Time Monitoring
- Integrating Data from Multiple Supply Chain Sources
- Customising Metrics and KPIs for Supply Chain Performance

Section 3: Data Integration and Predictive Analytics

- Integrating Supply Chain Data Across Platforms
- Using Predictive Analytics to Forecast Disruptions and Opportunities
- Applying Machine Learning Models in Supply Chain Management

Section 4: Managing Exceptions and Automated Responses

- Identifying Supply Chain Disruptions and Exceptions
- Automating Responses to Common Supply Chain Events
- Escalation and Workflow Management for Critical Issues

Section 5: Optimising Supply Chain Performance

- Real-Time Performance Monitoring and Reporting
- Using Data Insights to Optimise Inventory, Lead Times, and Costs
- Collaborating with Suppliers and Partners through SAP Networks

Section 6: Case Studies and Practical Applications

- Real-World Examples of SAP Supply Chain Control Tower Implementation
- Best Practices for Managing Global and Complex Supply Chains
- Lessons Learned from Successful Deployments

Section 7: Future Trends in Supply Chain Management with SAP

- Emerging Technologies in Supply Chain Visibility and Analytics
- The Role of Artificial Intelligence and Blockchain in Supply Chains
- Preparing for the Future of Digital Supply Chains

Certificate Description

Upon successful completion of this training course, delegates will be awarded a Holistique Training Certificate of Completion. For those who attend and complete the online training course, a Holistique Training e-Certificate will be provided.

Holistique Training Certificates are accredited by the British Assessment Council (BAC) and The CPD Certification Service (CPD), and are certified under ISO 9001, ISO 21001, and ISO 29993 standards.

CPD credits for this course are granted by our Certificates and will be reflected on the Holistique Training Certificate of Completion. In accordance with the standards of The CPD Certification Service, one CPD credit is awarded per hour of course attendance. A maximum of 50 CPD credits can be claimed for any single course we currently offer.

Categories

Manufacturing, Procurement, Warehouse, Logistics & Supply Chain, Quality & Productivity

Tags

Supply Chain , SAP , Control Tower

Related Articles



[Optimising Supply Chains: The Control Tower Advantage](#)

Embrace the game-changer: Supply Chain Control Towers. Witness how these nerve centres revolutionise modern business. Discover real-time visibility, predictive analytics, risk mitigation, and more. Unleash the power of agility, cost optimisation, and customer satisfaction. Supply chain technology leaders hold the key to unlocking this catalyst for change.